

SoftwareFX

Software FX, Inc.

5200 Town Center Circle
Suite 450
Boca Raton, Florida USA
33486

Phone: (800) 392-4278
(561) 999-8888

Fax: (561) 998-2383
sales@softwarefx.com
www.softwarefx.com

Technical Support

Phone: (561) 392-2023
support@softwarefx.com

Software FX Ltd.

Broad Quay House
Prince Street
Bristol, UK
BS1 4DJ

Phone: +44 (0) 117 905 8733
Fax: +44 (0) 117 905 8833

www.softwarefx.co.uk

Software FX Germany

Postfach 19 05 25
80605 München
Deutschland
0800-CHARTFX

Phone: +49 (089) 1216 25-33
0800-CHARTFX

Fax: +49 (089) 1216 25-34
www.softwarefx.de

SoftwareFX
Any Chart, Anywhere!



Chart FX Maps

Quick Start Guide

www.softwarefx.com

Chart FX Maps Quick Start Guide

<u>Table of Contents</u>	<u>Page</u>
Introduction	3
What is Chart FX Maps?.....	3
Chart FX Maps At-A-Glance	4-5
Select or create your map.....	4
Connect to your data source	4
Define rules and customize map options.....	4
Deploy your application	5
Selecting or creating your map	6
Populating the map	6
Setting the map's visual attributes	7
End User Interaction.....	8
Chart FX Maps and Internet/intranet applications.....	9
Adding Chart FX Maps in a VS.NET Application.....	9
What's included on the CD?	10
Requirements, Pricing and Licensing.....	10

Information in this document is subject to change without notice and does not represent a commitment on the part of Software FX, Inc. The software, which includes the information contained in any databases, described in this document is furnished under a license agreement or nondisclosure agreement. The software may be used or copied only in accordance with the terms of those agreements. It is against the law to copy the software on any medium except as copy of the software for backup purposes. No part of this manual may be reproduced or transmitted in any form or by any means, electronic or mechanical, including photocopying, recording, or information storage and retrieval systems, for any purpose other than the purchaser's personal use, without the express written permission of Software FX, Inc.

Software FX, Inc. disclaim all warranties, either express or implied, including but not limited to implied warranties of merchantability and fitness for a particular purpose, with respect to the instructions contained in this manual. In no event shall Software FX, Inc. be liable for any damages whatsoever including, without limitation, damages for loss of business profits, business interruption, loss of business information, or other pecuniary loss, even if Software FX, Inc. has been advised of the possibility of such damages. Because some states do not allow the exclusion or limitation of liability for consequential or incidental damages, the above limitation may not apply to you.

©1993-2004 Software FX, Inc. All rights reserved.
Printed in the United States of America.

*Chart FX is a registered trademark of Software FX, Inc.
Other products and brand names are trademarks or registered trademarks of their respective owners.*

Introduction

For over a decade, Chart FX™ has helped developers integrate charts and graphs in their reporting and data visualization applications. Unfortunately, there are situations which can not be adequately represented with traditional charting methods.

For example, consider the case of depicting data on a US or an airplane seating map. Firstly, it will not be intuitive for end users if data would be represented in a bar, line or pie chart. Also, although you could easily create hotspots or hyperlinks in different areas of the image; as a developer you don't have access to individual objects (such as states or seats, respectively) to set other attributes, such as fill colors and borders to visually convey real-life conditions in the map.

If your business problem would be better represented by a customized vector graphic that changes according to the underlying data – Read on!

What is Chart FX Maps?

Chart FX Maps is a .NET solution that uses SVG, a versatile vector-based imaging standard, to allow developers to create and integrate dynamic maps and deploy the most impressive Windows and Web Forms applications. As a developer, you could simply select and integrate hundreds of pre-built geographical maps or, if you are building an application that requires a custom map, you could create it from scratch and tailor it to your specific requirements.

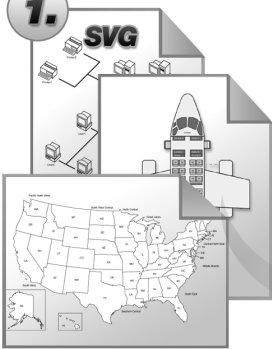
Chart FX Maps integration into Visual Studio® .NET is simple and straightforward; enabling the creation and deployment of powerful applications where end users can visualize and analyze data graphically and interactively.

Additionally, Chart FX Maps works as an extension of Chart FX for .NET, the leading charting tool for .NET developers, allowing map data to be viewed as other popular chart types for further analysis and without additional development or coding efforts; effectively increasing customer satisfaction and developer productivity.

The process is as simple as selecting or creating a vector map, feeding the data and, finally, specifying visual attributes such as fill color and border styles. Just take a closer look:

1.

SVG



Select your map or create one from scratch!

Chart FX Maps uses the versatile SVG (Scalable Vector Graphics) image standard to allow developers integrate and create the most impressive graphical .NET interfaces for Windows and Web Forms applications. As a developer, you could select and integrate hundreds of pre-built geographical maps or create SVG files from scratch that are tailored to your specific application requirements.

2.

Database or XML

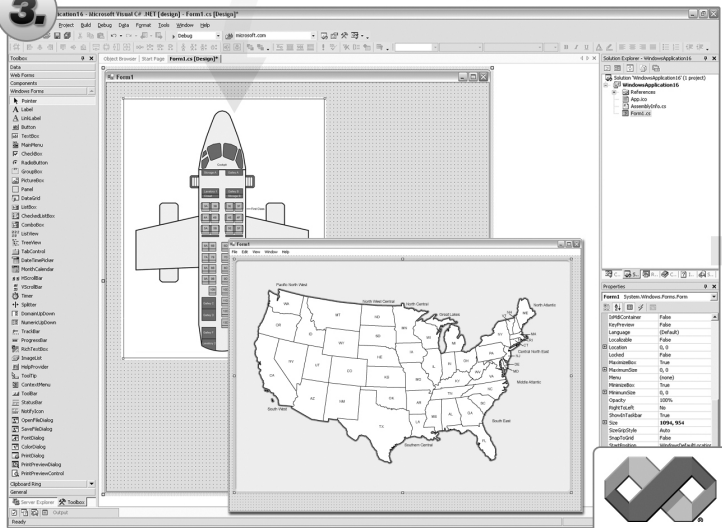
- 1A vacant
- 1B vacant
- 1C reserved
- 1D reserved
- 2A reserved
- 2B vacant
- 2C vacant
- 2D reserved
- 3A vacant
- 3B reserved
- 3C vacant
- 3D reserved



Connect to your data source and feed the map!

A data source such as an XML file or a database is all you need to populate individual or groups of objects in the map. Once you have loaded your data, Chart FX Maps will read the object names in the map file and match them to the labels in your data source for further access from Visual Studio .NET.

3.



Define your rules and customize map options with Visual Studio .NET

Chart FX Maps integrates seamlessly to Visual Studio® .NET and allows you to use the powerful C# or VB.NET languages to set conditions that will be reflected in the map as visual and dynamic attributes such as the fill color, border and hyperlink settings that end users can recognize and interact with.

Chart FX Maps At-A-Glance

4.

AirTravel RESERVATIONS

Home • Search • Reservation • Contact Us

SEATS AVAILABLE FOR FLIGHT # 1430A

Select your Seat

The aircraft seating chart below shows available seats and seat numbers. You can view the available seats and select the one you would like to reserve. Enter the seat number below to continue with your reservation.

6A	6B	6D	6E	6F
7A	7B	7D	7E	7F
8A	8B	8D	8E	8F
9A	9B	9D	9E	9F

Reserve Seat Number:

Select a Seat:

Submit Request

3:15pm
3:49pm

North West Coast
North Central
Great Lakes
South Central
South East

More than 200month
150-200month
50-149month
Less than 50month

Map of the United States showing state boundaries and shaded regions. A circular callout shows a detailed view of the Southeastern region, including states: KY, TN, NC, SC, AL, GA, and South.

Deploy your application and let your users visualize and explore data!

Chart FX Maps can not only be integrated to Windows Forms applications but provides a powerful ASP.NET server side component that allows you to display dynamically created images in browser based applications. Also, a powerful .NET client component allows users to interact with the map by summarizing data, zooming portions of the map and even drill-down to other related maps.

Selecting or Creating Your Map

Chart FX Maps provides a full library of geographical maps that you can quickly integrate and deploy royalty-free. They are:

World ----->	Continents ----->	United States
	Europe	3-Digit Zip Codes
	Asia	5-Digit Zip Code***
	Africa	Counties by State
	North America	Districts***
	South America	
	Oceania	
	Antarctica	

*** Contact Software FX for availability.

Although Chart FX provides an extensive library of geographical maps, there will be many situations where you may want a map of something that we do not have available. For example, a network or a stadium seating diagram. This does not mean, however, that you cannot use Chart FX Maps.

Creating custom SVG images is easy and fully documented in the Chart FX Maps Help system. All you need is a standard SVG editor, such as Adobe Illustrator®, or, if you prefer, you can commission Software FX to create the vector map for you. For additional information please contact us at sales@softwarefx.com or visit our web site at www.softwarefx.com.

Populating the Map

Once the map has been selected or created you can use Visual Studio .NET to connect to most popular data sources like text and XML files as well as most popular database engines.

Chart FX Maps will match objects in the map to the labels in your data source. If the data source labels do not match the naming convention on the SVG file, an XML conversion file can be used to prevent unnecessary changes to the data source or the SVG map.

Setting the Map's Visual Attributes

There are many conditional and per-point attributes you can use to highlight objects in the map; including colors, borders, gradients, point labels, hyperlinks, patterns, drilldowns and much more!

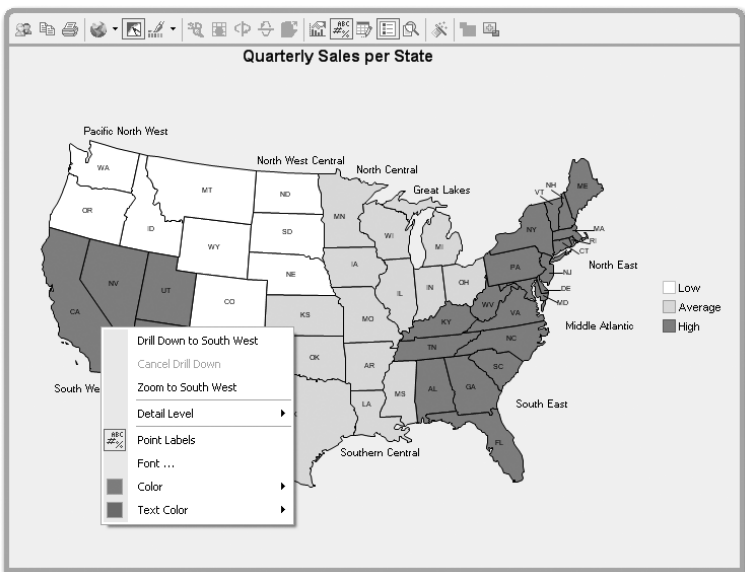
The following piece of code demonstrates how easy is to create a map of Quarterly Sales by State. In this case, the map is populated from a text file. However, it can also be populated from many other sources such as ADO.NET recordsets, XML files, etc.

```
// Customize the conditions applied to the rules
// 3 ranges will be defined: 0-1500 (Low), 1500-3000 (Average),
// 3000+ (High)
// These conditions can also be easily configured at design-time
SoftwareFX.ChartFX.ConditionalAttributes condition =
    map1.ConditionalAttributes[ 0 ];
    condition.Color = Color.White;
    condition.Condition.From = 0;
    condition.Condition.To = 1500;
    condition.Condition.ToOpen = true;
    condition.Legend = "Low";
    condition = map1.ConditionalAttributes[ 1 ];
    condition.Color = Color.LightGreen;
    condition.Condition.From = 1500;
    condition.Condition.FromOpen = false;
    condition.Condition.To = 3000;
    condition.Condition.ToOpen = true;
    condition.Legend = "Average";
    condition = map1.ConditionalAttributes[ 2 ];
    condition.Color = Color.Red;
    condition.Condition.From = 3000;
    condition.Condition.FromOpen = false;
    condition.Legend = "High";
// Select the desired map from the library bundled with the
// product (SVG)
    map1.MapSource = "US\\Continental-USA-Regions-
    StatesAbrev.svg";
// Configure the link file (if required)
    map1.LabelLinkFile = "US_LabelLinks.xml";
// Populate the map
    map1.DataSource = new TextProvider("MapSalesData.txt");
```


End User Interaction

At runtime, Chart FX Maps provides an intuitive user interface that allows end users to further customize the map view. End users may zoom, drilldown, adjust detail level and modify object attributes (point labels, font, and colors) by simply right clicking objects in the map and accessing a context menu and toolbar provided by the Chart FX Maps client control.

The following image illustrates Chart FX Maps end user interaction in the context of a browser based application:



Additionally, end users may select other views such as bar or line charts that also inherit the same visual attributes in the map, improving the data visualization and analysis capabilities of your application.

Note: This interaction is possible in Windows Forms as well as Web forms applications via the Chart FX Maps .NET client control which is fully managed and secure when running on the browser.

Chart FX Maps and Internet/Intranet Applications

Not only has Chart FX Maps been developed with the server implementation in mind, but its small memory footprint, browser independence and scalability makes it the perfect tool for any commercial or corporate grade application. Also, the Chart FX Maps .NET client control can be easily and securely deployed across the organization via a single file download from Internet Explorer.

Performance wise, Chart FX Maps can serve a multitude of end users with sub-second maps and the solution is fully scalable and compatible with intricate server architectures, such as web farms.

Adding Chart FX Maps in a VS.NET Application

1 Open Visual Studio .NET and select the New Project from the File Menu.

2 Add Chart FX Maps to your toolbox.

- Selects Tools-> Customize Toolbox.
- Select the .NET Framework Components tab and check the Map control checkbox. Important: use the SoftwareFX.ChartFX.Map.WinForms namespace if you created a Windows Forms applications or SoftwareFX.ChartFX.Map.Server if you want to use Chart FX Maps in a Web Forms project.
- Once you have selected the chart control, click Ok.

3 To integrate the extension using Design-Time controls:

- Create a Windows Form or Web Forms Charting Application within VS.NET.
- Select the Map control from your Toolbox and drop it to your form or page.

What's Included on the CD?

The accompanied CD includes a fully functional version of Chart FX Maps that you can activate with the license key displayed on the label or receipt. If you didn't purchase a Chart FX Maps license or if you don't have Chart FX for .NET, the CD bundled with this package also provides a 30-day trial version of Chart FX for .NET and Chart FX Maps.

If you are not a technical person, please ask a developer in your organization to put up a quick Chart FX Maps demo application for you.

Requirements, Pricing and Licensing

Chart FX Maps requires Chart FX for .NET and Visual Studio .NET which are sold and licensed separately.

If you are using Chart FX Maps in a Windows Forms application, you will need a single license that allows you to build applications; end users are royalty free for distributions. Restrictions apply.

For Web Forms applications, Chart FX Maps is priced on a per server basis; clients are royalty free for distribution.

If you are a software vendor looking to integrate Chart FX Maps into a commercial application for resale please contact Software FX at sales@softwarefx.com or call us at (561) 999-8888.

Hurdle the Entry Barrier.



Develop advanced data visualization solutions for only \$299?

Don't compromise your budget up front only to have the project cancelled 6 months later. The *Chart FX Developer Studio* is a complete data visualization solution for the COM, .NET and Java platforms, as well as for IDEs such as *Microsoft® Visual Studio .NET*, *Delphi* and *C#Builder*. Also included in the Developer Studio are the Chart FX Extensions, including *OLAP*, *Maps*, *Financial*, *Statistical*, *Real-Time* and *Wireless*, which add capabilities or provide a specific functionality. This allows a developer to only include the functionality that is needed and maintain a high level of stability and performance. This collection of non-expiring, full development versions of the entire Chart FX product line into one package makes for a convenient way to develop for different environments and different needs. For more information, visit www.softwarefx.com.



Chart FX DEVELOPER STUDIO

(800) 392-4278
www.softwarefx.com